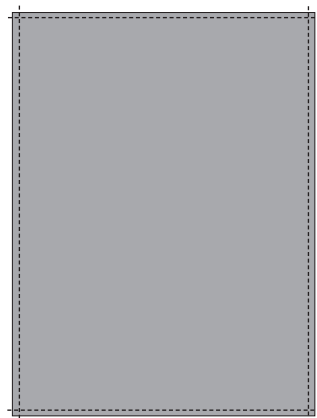


Files: TIFF, EPS, PDF - 300dpi/CMYK

Magazine formats: 225x285 mm + 3 mm for cropping of all sides

Annotation: All fonts must be transformed to curves

Margins for text: 15 mm of interior side, 10 mm of other sides



Whole page 1/1

Format: 225x285 mm
(+ cropp of 3 mm of all sides)

First page (A1)

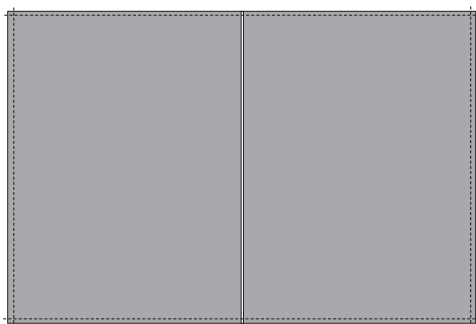
Format: 225x285 mm
(+ cropp of 3 mm of all sides)

Second and third cover page (K2 ili K3)

Format: 225x285 mm
(+ cropp of 3 mm of all sides)

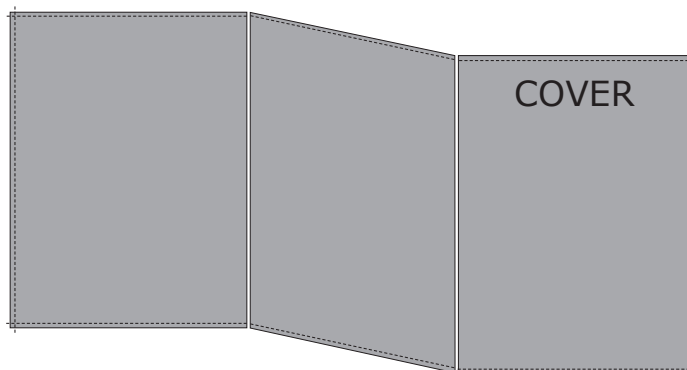
Back cover page (K4)

Format: 225x285 mm
(+ cropp of 3 mm of all sides)



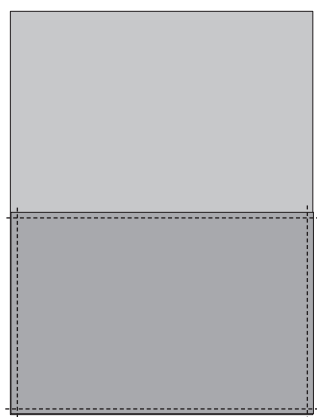
Double

Format: 450x285 mm
(+ cropp of 3 mm of all sides)



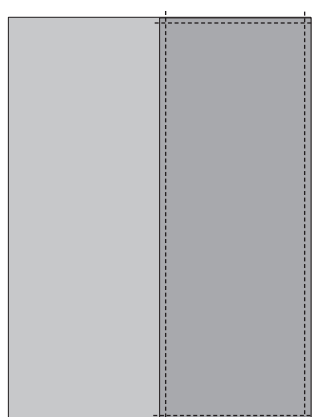
Double cover

Format: 2x225x285 mm
(+ cropp of 3 mm of all sides)



Half of a page
(horizontal)

Format: 225x142.5 mm
(+ cropp of 3 mm of all sides)



Half of a page
(vertically)

Format: 111x285 mm
(+ cropp of 3 mm of all sides)



Third of a page

Format: 76x285 mm
(+ cropp of 3 mm of all sides)